

三洋輸送機工業株式会社
SANYO YUSOKI KOGYO

跨越世紀的電梯

承襲日本原廠的優良血統
新一代的三洋電梯 (SANYO ELEVATOR)

重新制定跨越 21 世紀的電梯新基準

從機電系統、智慧型電腦控制
到整體內裝的大膽嘗試
三洋電梯提出超越您需求的全新改造計劃
將使得安全性、舒適性與豪華感均凌駕於同型電梯之上
而這些卻只是三洋電梯的基本配備之一……

愈來愈多的研發科技
將陸續落實於新一代的電梯上
您將可感受到不同以往的平穩性
在新一代的三洋電梯展露無遺
同時，全新的梯廂造型
以全新的素材設計進駐豪華大樓
成為大樓整體裝潢的一部份
而安全性的考量
自是無須您多費心思
高科技的電腦監控
加以全天候的維修保養
形成一縝密的安全網
三洋的用心早已超乎您的想像
展望 21 世紀的電梯
三洋電梯・全新登場

To inherit the excellent pedigree of the original factory in Japan
The new generation's SANYO ELEVATOR
Reformulate the new standard of the 21 century's Elevator

From Engine-Machine system, wisdom computer control to the bold attempt of the whole interior design. The SANYO Elevator provide you a all new remark plan which surpasses your need.
It overrides the same type of elevator in whatever the safety, comfort and luxe. However, there are within the basic equipment of the SANYO ELEVATOR.

More and more R&D technology will continually full fill in new Elevator. you will be affected by the stability which you never felt before. In the mean while, the all new Trunk
March into the splendid building and station there with all new material.
Which become one of the whole building's decoration. And the safety consideration goes without saying.
The Hi-Tech control of computer
And all-day maintenance
Has formed a deliberate safety net.
The diligence of the SANYO ELEVATOR has for beyond your imagination.



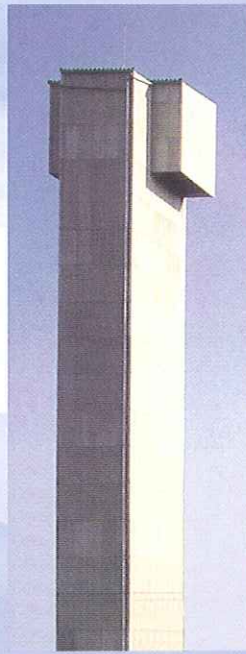
SANYO・1955



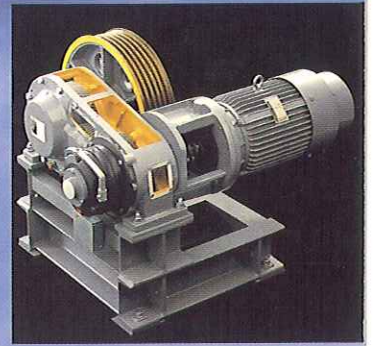
SANYO・1970



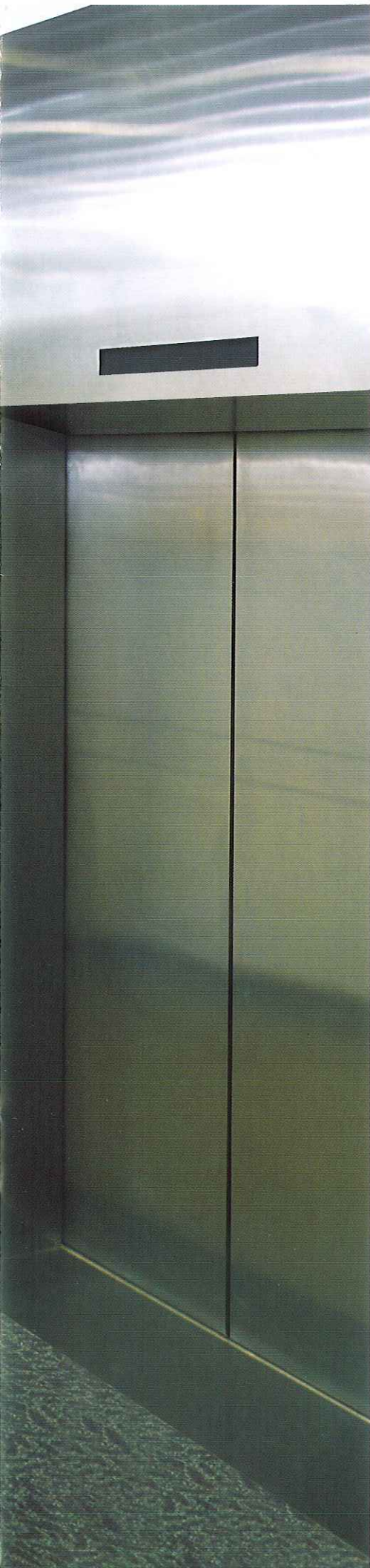
SANYO・1985



SANYO·TODAY





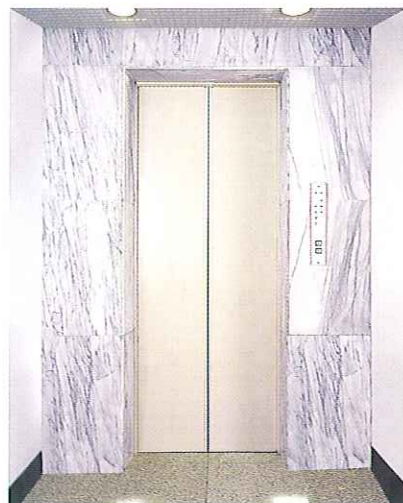


ENTRANCE DESIGN

乘 場 設 計

三洋的電梯乘場門(ENTRANCE)設計，包含標準型、寬斜型與寬斜幕板型三種型式，可依您的預算、樓高與大樓的裝潢作適當的選配，除此之外，不鏽鋼與烤漆面板的多樣化，亦提供您不同的選擇。

The SANYO ELEVATOR Entrance includes three types: the standand type, the broad-oblique type and the transom(panel) type. You can depend on your budget, the height of building, and the decoration to choose the most suitable one. Besides, the various of the stainless and the roast lacquer panel also provide you so many choices.



Door: LD-CO-800-EP
Jamb: EJ-70-EP



Door: LD-CO-900-HL
Jamb: EJ-300-HL



Door: LD-CO-1000-HL
Jamb: EJ-300-HL



NC-4308-ST



NC-4203-EP



NC-4305-PL



NC-5333-CA

CAGEDESIGN

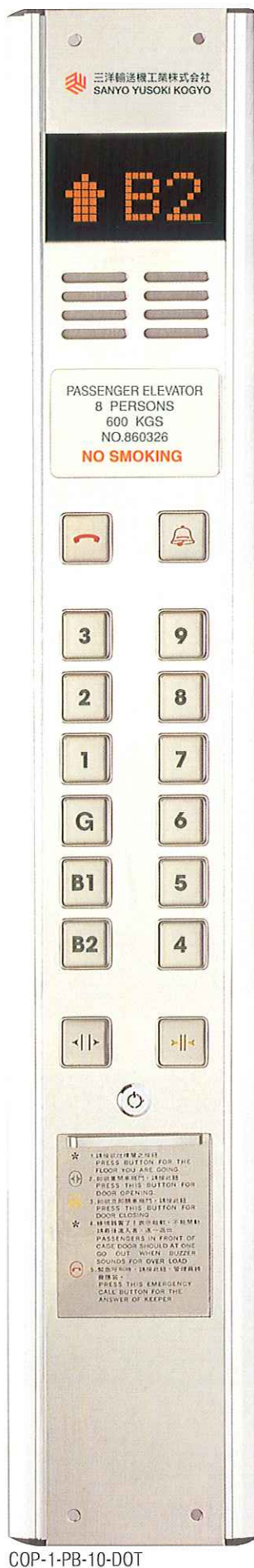
梯 廂 設 計

全新的梯廂 (CAGE) 設計，打破傳統的制式作法，梯廂空間宛如客廳般的華麗與舒適。

梯廂本體在標準配備之外可另外加價選用多項的配備，如發色烤漆處理的不鏽鋼面板、大理石地板、仿核桃木紋操作盤 (CAR OPERATING PANEL)、語音合成播放系統或殘障電梯的特殊裝置等...，皆能提供您不同特性的需求。

The all new cage design can break the tradition way, bring the cage space as gorgeous and comfortable as living room.

In addition to the standard equipment, the cage-in-itself could choose to add budget to install more equipment, such as marble floor, imitate walnut lines car operating panel, pronunciation synthetic paging system, or elevator for the handicapped.....etc. What you need are all during our design elevating.



COP-1-PB-10-DOT



HIB-1-PB-13-SEG



HL-1



HB-5-PB-6



CPI-1-SEG



CPI-3-DOT

COLORDESIGN

色彩計劃

細心規劃的色彩計劃，創造亮麗的空間感覺，從天花板、側板到地板，提供多樣的色彩及不同的材質表現，柔和的照明、精緻的觸感，與大樓整體作一完美的搭配。

The attentive color plan creates a brilliant Space. From ceiling, interior panel to floor, We provide variety, colors and different materials, making the illumination more mild, the tactile sense more delicate, which can match the whole building perfectly.

CEILING



NC-5333



NC-5332

FLOORING



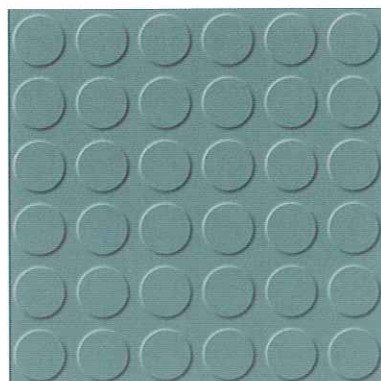
Vinyl Tile VT-501



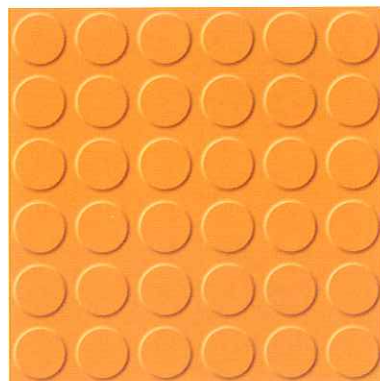
Vinyl Tile VT-507



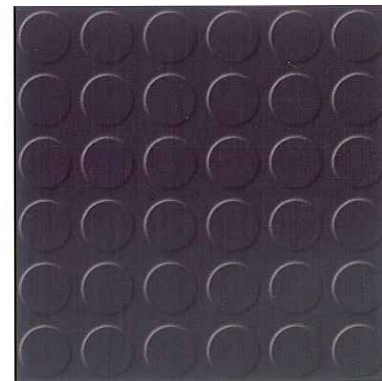
Vinyl Tile VT-531



Rubber A105



Rubber A112



Rubber A104



NC-4305



NC-4308

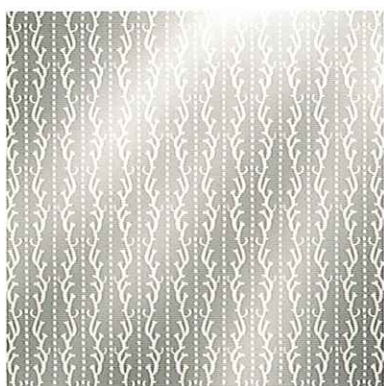


NC-4302

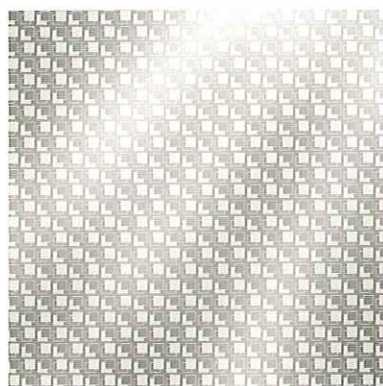


NC-4203

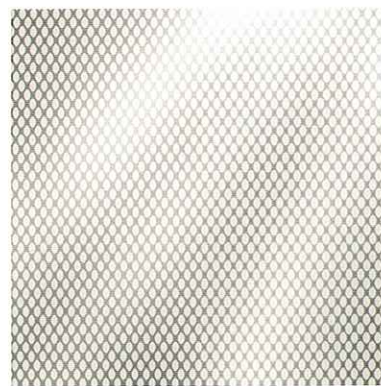
ETCHING PATTERN



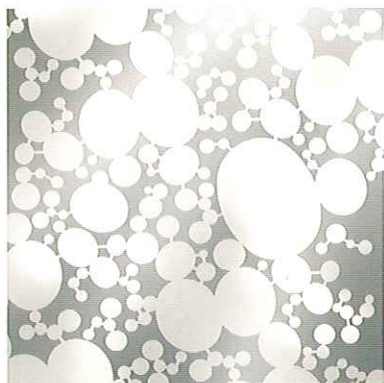
HJ-221



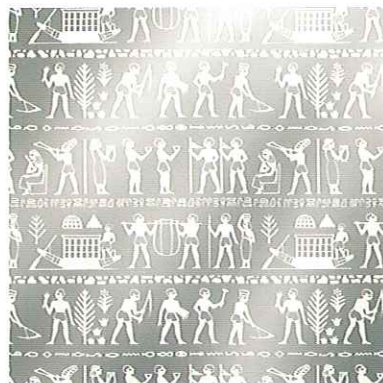
HJ-246



HJ-311



HJ-229



HJ-258



HJ-312

以上顏色及式樣僅供參考，請以業務員所提供的樣板為準。

The above-mentioned color and type are just for reference, the criteria are the color boards our salesman shown you.

標準配備

紅外線安全履

紅外線安全履是利用紅外線感應，在電梯於開門時遇障礙物，門即重新開啓，以防止因疏忽而造成的意外。

防止嬉謔功能

當電梯乘客連續按下每一層樓按鈕時，電腦即自動測知電梯負載的重量，在應答最近樓層後即自動將其它呼叫信號消除。

誤登錄取消機能

當按錯按鈕時，在第二次按下誤按之樓層按鈕時，便會取消錯誤樓層。

超載裝置

當搭載重量超過額定載重時，即發出警告信號，待載重減少於額定載重時，電梯即重新啓動。

自動控制廂門關閉時間

可由微電腦依電梯使用頻率，自動調整電梯廂門的關閉時間。

自動關閉照明及通風扇

於一段時間無人使用電梯時，自動關閉照明及風扇，再有人使用時即自動開啓照明及風扇電源。

安全運轉系統

電梯運轉因異常狀況，電梯非停於基準位置時，電梯會以低速停至最近樓層，停車關門，供乘客離開電梯。(停電或可能影響乘客安全的狀況下，本系統不發生作用。)

次層樓停靠機能

電梯運轉至欲停靠的樓層，如乘場門無法打開，電梯會自動行駛到下一個樓層開門，讓乘客離開電梯。

停電照明

當電梯停電時，在車廂內維持一二〇分鐘以上之緊急照明。

停機操作

在電梯需求較少的時間，為了節省能源，將電梯喚回停置樓層，停止運轉。

選用配備

地震管制運轉裝置

當地震強度達到一定規定值以上時，電梯立即切換至「地震管制運轉」，電梯會在就近樓層停靠，並開門讓車廂內乘客疏散。

火災管制運轉裝置

電梯「火災管制運轉」就是當發生火災時，電梯迅速且正確下降至避難階並停止運轉，讓火災損失減至最低。

發電管制運轉裝置

具有發電設備的建築物本身，可藉由本管制運轉，將因停電而無法運轉之電梯安全運轉至避難階(基準階)，將乘客救出，並留置一台或數台擔當停電時之交通運輸。當恢復供電時，即自動恢復正常運轉。

開門延長裝置

為需要較長的時間進出車廂或裝卸貨物，而在操作盤上追加開門延長按鈕。

語音播放系統

以電腦語音合成聲，播放電梯欲往樓層或歡迎感謝等聲音。

LED顯示器

以發光二極體(LED)顯示器，顯示樓層、日期、等資訊。

專用操作

僅對於特定樓層作單獨運轉，對於一般車廂操作則無作用。

操作員操作(ATT)

對於飯店或百貨商場等大樓，設置操作員操作按鈕，由操作員操控時，可改變電梯運轉方向及電梯門之開關。

特定階密碼呼叫

特定樓層或人員使用設定密碼，有密碼者，才能到達指定之樓層。

刷卡機管制系統

對於特定電梯或樓層，配合刷卡機按裝，設定特定持卡者使用電梯之功能。

群管理系統

同時對三台以上的電梯進行操控，自動調整尖、離峰時間的電梯使用，以減少電梯無謂的運轉，節省能源。

CCTV車廂監視系統

藉由車廂內的監視器，在監控中心即可瞭解車廂內的狀況，可確保搭乘電梯時的安全性。

電梯監視盤

由電梯運轉監視部份、操作部份、及對講機所構成，可下達各種管制指令、通話或監視。

遠隔監視系統

利用電信網路與各地的電梯連線，對於電梯運轉時的各種狀況可隨時監控，並同時進行語音安撫與派員檢修。

CRT中央監控系統

本系統以電腦將電梯控制盤之訊號傳送至電腦主機，將全層電梯運轉狀況呈現在監控中心。

Standard Equipment

IR-C Type Safety Shoe

The infrared ray can respond when the elevator is closing its door and happens to have obstacles. The IR-C Type safety shoe would make the door re-open to prevent the accident from carelessness.

Play-Prevention Function

If the passenger pushed every floor's button, the computer would figure out the elevator's loading capacity. After answering the nearest floor, it would dismiss the other calling message automatically.

Cancel error-carry Function

If someone pushed the wrong button, he (or she) can push it once more and the wrong one would be canceled.

Over-Load installation

When over Load, it would send warning signal. And when the load is less than specified amount, the elevator would start again.

Auto Control the Door Opening and Closing Time.

The micro computer can adjust the opening and closing time of the car door automatically according to the frequency of the elevator's usage.

Cut off the illumination and fan automatically.

If nobody to use the elevator for a period of time, it would cut off the illumination and fan. As there's someone to use, it would start the illumination and fan automatically.

Safety operation

The unusual situation occurs which leads the elevator can't stop at the standard position. It would stop at the nearest floor in a low speed. Then open the door to let the passengers leave.

Stop at the next floor.

The elevator is going to the pointed floor but the Landing door can't open. It would drive to the next floor and open the door to let the passengers leave.

Emergency Lighting

It would keep more than 120 minutes urgent illumination when the elevator has a power failure.

Stop Operation

During the less require time, the elevator could be called back to the stayed floor and stop operating to save the energy.

Selected Equipment

The Earthquake Emergency Operation

When the intensity of earthquake reach to the certain figure, the elevator will change to the "Earthquake Emergency Operation" right away. It will stop at the nearest floor and open the car door to disperse the passengers.

The Fire Emergency Recall Operation

The purpose of "Fire Emergency Recall Operation" is that, When the fire happens, The elevator would stop down the Refuge Floor Swift & accurately and stop operating, so the loss would reduce to the minimum.

The Emergency Operation on Standby Power

The building with power equipment can by the way of "Emergency Operation on Standby Power" to get the elevator to the Main Floor and rescue the passengers safely when the power supply is cut off. And you can stay one or some elevators as a means of transport.

When the power supply is recovered, it would regain the normal operation automatically.

Door Opening

To have longer time to pass in and out the car or load and unload the goods, you may add "Door Open Button" on the control panel.

Auto-Announce

It is made use of computer to synthesize the pronunciation, paging "the elevator is going to xx floor." or "Welcome" "Thank you"....etc.

LED monitor

The LED (Light Emitting Diode) monitor can show the floor location, date and some other information.

Single Automatic Operation

It is only available for specified floor and shows no effect for ordinary car operation.

ATT

The building such as hotel or department store may set the "ATT" button. The operator can change the direction of elevator's operation and door opening by means of manipulating it.

Code Call

It is the secret code for specified floor or person. Only who owns the code that can reach the specified floor.

Printing Machine Control

You can set the printing Machine on the specified elevator or floor. So there's only the card holder can use it.

Selective Collective Operation

It can manage more than 3 elevators in the meanwhile and adjust the usage of the peak/off time automatically. So that it could reduce the meaningless operation and save more energy.

Car Control System.

Through the watching machine in the car, the control center can handle the car's situation to ensure the passenger safety.

Elevator Control Board.

It consists of the watching, operating and speaking system. It can make every kinds of control dialogue or watching instruction.

Remote Watching System.

Connecting the telecommunications with elevators everywhere, it can control every condition when the elevator is operating. In the meanwhile, it can do pacifying paging and send the engineer to overhaul.

Central Control System

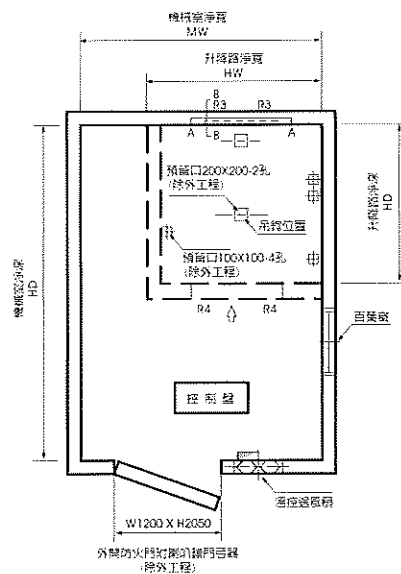
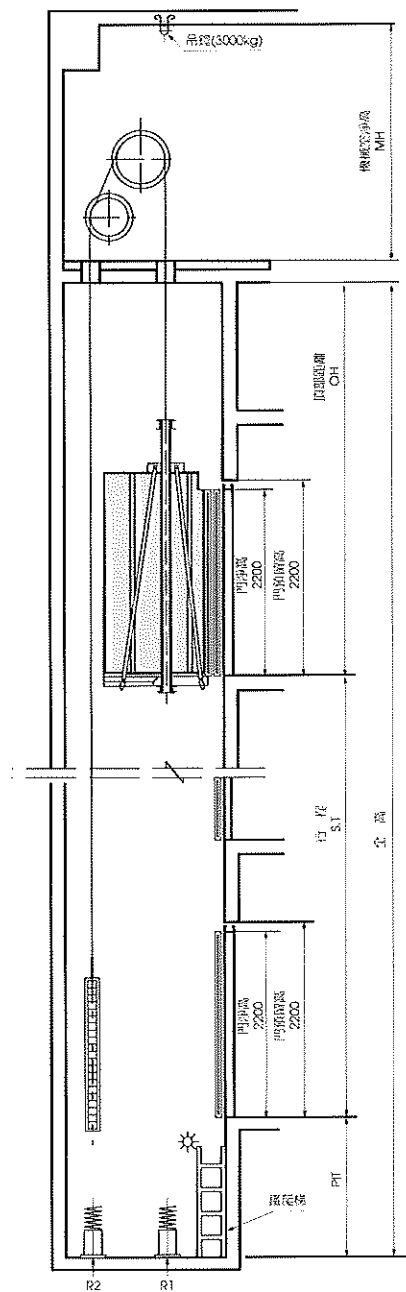
The system delivers the messages of the elevator's control panel to the host of computer. The whole elevator's operation is shown in the control center.

HOISTWAY PLANING

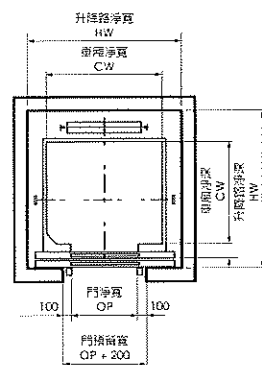
配置計劃

標準配置圖及參考尺寸

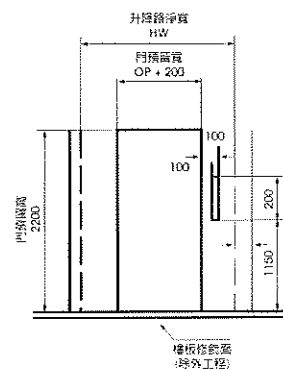
Standard layout & dimensions



▲ 機械室留孔位置



▲ 升降路平面圖



▲ 出入口預留平面圖

鋼索式客梯標準規格表

Standard dimensions & reactions

型 式	載重	乘人數	速度	電動機	升 降 路				車 廂		開門	機 械 室			機坑反力		機房反力		
	LOAD	P	SPEED	MOTOR	淨寬	淨深	頂部距離	機坑距離	淨寬	淨深	淨寬	淨寬	淨深	淨高	KG		KG		
TYPE	KG	人	M/MIN	KW	HW	HD	OH	PIT	CW	CD	OP	MW	MD	MH	R1	R2	R3	R4	
P-6-CO-60	450	6	60	5.5	1800	1450	4450	1550	1400	850	800	2400	2700	2050	4920	4020	1890	1080	
P-6-CO-90			90	7.5	1850	1470	4650	1850						2250	7800	6540			
P-8-CO-60	550	8	60	5.5	1800	1630	4450	1550		1030		2400	3000	2050	5440	4340	2030	1150	
P-8-CO-90			90	11	1850	1650	4650	1850						2250	8840	7060	2090	1180	
P-8-CO-105			105				4850	2150						11050	8820				
P-9-CO-60	600	9	60	7.5	1800	1700	4450	1550		1100		2400	3200	2050	5760	4560	2120	1190	
P-9-CO-90			90	11	1850	1720	4650	1850						2250	9360	7410	2180	1230	
P-9-CO-105			105				4850	2150						11700	9270				
P-9-CO-120			120				15	1750						5050	2450	2800			2300
P-10-CO-60	700	10	60	7.5	1800	1850	4450	1550		1250		2400	3200	2050	6280	4880	2320	1300	
P-10-CO-90			90	15	1850	1870	4650	1850						2250	10210	7930			
P-10-CO-105			105				4850	2150						12760	9920				
P-10-CO-120			120				1900	5050						2450	2800	3300			2300
P-11-CO-60	750	11	60	7.5	1800	1950	4450	1550		1350		2400	3300	2050	6600	5100	2490	1290	
P-11-CO-90			90	15	1850	1970	4650	1850						2250	10730	8290			
P-11-CO-105			105				4850	2150						13410	10360				
P-11-CO-120			120				2000	5050						2450	2800	3600			2300
P-12-CO-60	800	12	60	11	1800	2000	4450	1550		1400		2400	3300	2050	6800	5280	2570	1330	
P-12-CO-90			90	15	1850	2050	4650	1850						2250	11180	8580	2600	1340	
P-12-CO-105			105				4850	2150						13980	10730				
P-12-CO-120			120				19	5050						2450	3000	2300			17200
P-13-CO-60	900	13	60	11	2050	2000	4450	1550	1600	1350	900	3000	3600	2050	8800	7000	3200	1640	
P-13-CO-90			90	15	2100		4650	1850						2250	14300	11380	3230	1650	
P-13-CO-105			105	19			4850	2150						17880	14220				
P-13-CO-120			120		2050	5050	2450	3200				2300	22000	17500	3360	1720			
P-15-CO-60	1000	15	60	11	2050	2100	4450	1550		1500		3000	4000	2050	9320	7320	3330	1760	
P-15-CO-90			90	15	4650		1850	2250						15150	11900	3470	1830		
P-15-CO-105			105	19	4850		2150	18940						14870					
P-15-CO-120			120	22.5	2200		5050	3300						2300	23300			18300	
P-17-CO-60	1150	17	60	15	2250	2150	4450	1600		1800		1000	3600	4000	2050	10200	7900	3650	2010
P-17-CO-90			90	19	2300	2200	4650	1900							2250	16560	12840		
P-17-CO-105			105	22.5			4850	2200							20720	10650			

ESCALATOR

電 扶 梯

三洋電梯的電扶梯系列，對於多人出入的場合如百貨公司、購物商場、電影院以至於車站大樓，皆能提供適切的規劃與便捷性。

對於流量的事先規劃，三洋提供電扶梯不同的形式選擇，流線的造型搭配透明玻璃的現代感表現設計，讓樓層間充滿明亮的氣氛與規則化的動線。

在安全性方面，護裙板設計採用安全性高的樹脂素材表面處理，這在電扶梯的升降與乘客的鞋底接觸面具有絕對的安全性，另可選擇性的安裝踏板三邊合成樹脂製警示線以增加站立時的安全性。

另外，像電扶梯手把顏色式樣及欄杆下細燈管的照明設計，皆在您選擇的範圍之內。

The SANYO ELEVATOR'S Escalator series can provide the adequate plan and conveniente. such an the place where has so many people come and go tibe the department store. shopping mall. cinema and the station building.

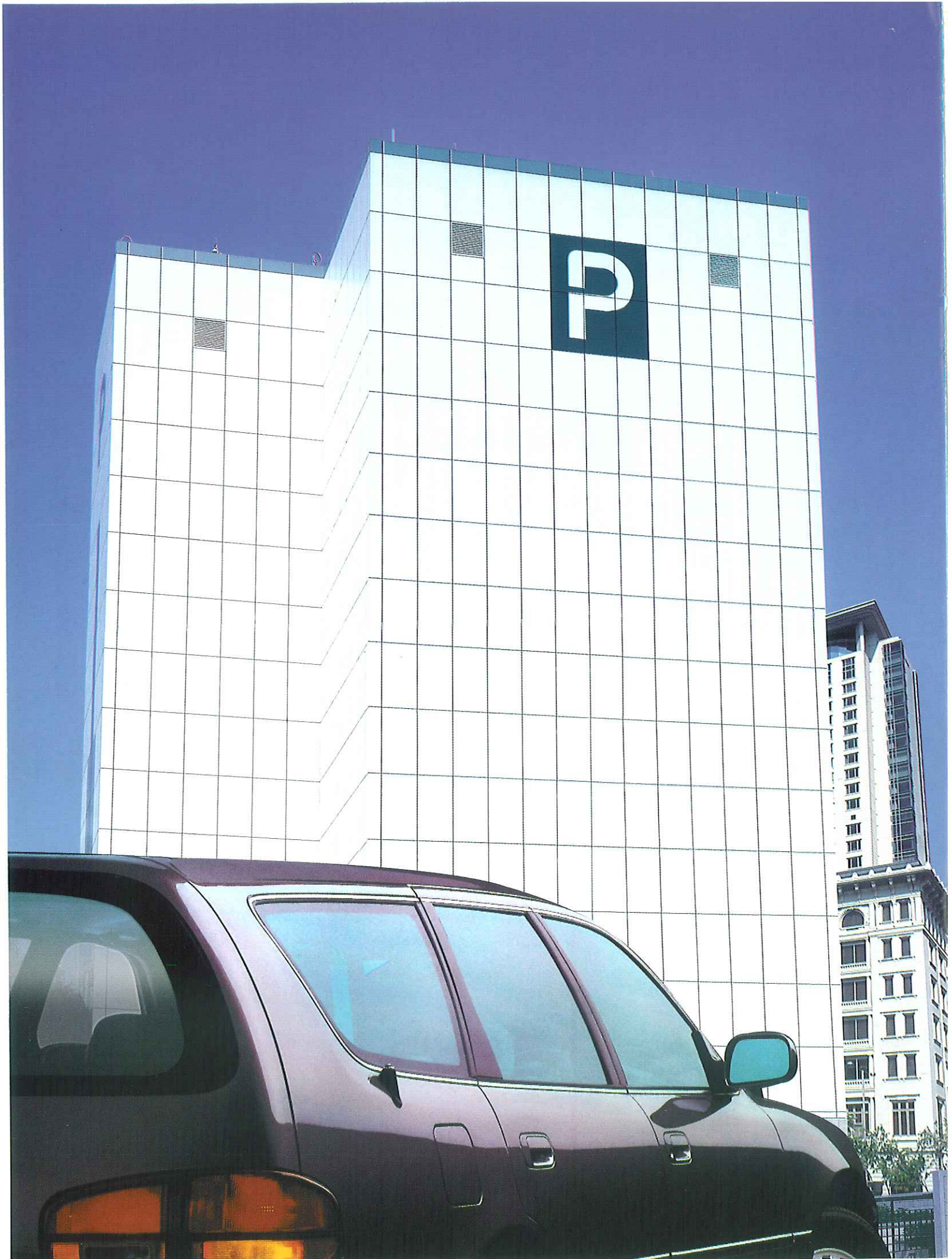
We provide different kinds of elevators for you to choose to plan the flow in advance. The streamlined moulding match the see through glass revealing a up-to-date design. And there's bright atmosphere during the floors.

For the safety, we have skirt Guard panel which adopt the resin material for covering. By the time the Escalator is hoisting. The passenger's shoes would touch it safely. Another way, you can chooce to add Demarcation Line made of synthetic resin to enhance the safety while standing on it.

Besides, the color and style of the hand-rail as well as the illumination of slim-line lamp are all among youn choice.







PARKING SYSTEM

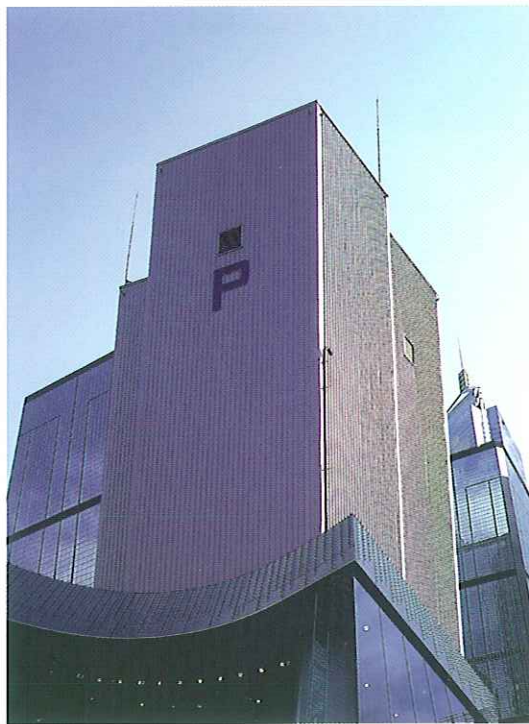
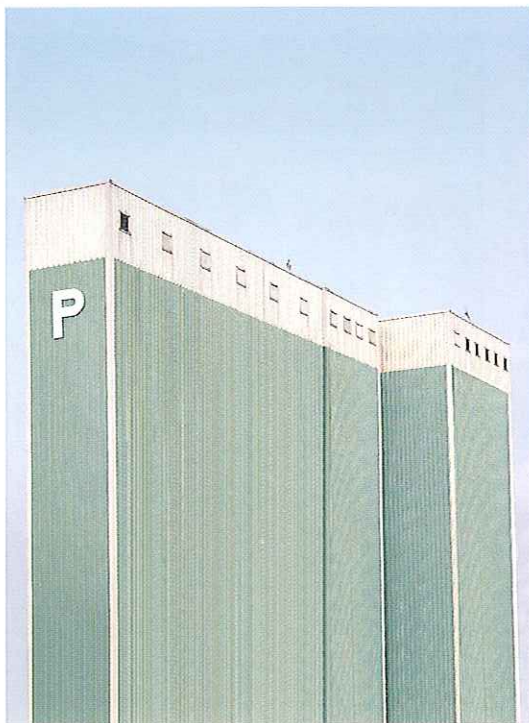
停車設備

城市極度的開發所帶來的停車位嚴重不足的現象，停車塔的停車方式將是未來解決停車問題的趨勢，三洋電梯停車塔設備採用垂直循環方式以最小的佔地面積，開發出防止左右震動裝置，增加穩定性與安全性。

按鍵式的操作方式、電腦化的管理功能，使能以最少的人力迅速操控車輛的進出，發揮停車塔的最大功能。

The urbanization has brought the seriously insufficient of the parking lot. the parking Garage Equipment is the trend to solve the parking problem in the future. The SANYO ELEVATOR'S Parking Garage Equipment use the vertical Circulating type as the smallest occupation area, Developing the installation to prevent Horizontal Seismic Which could enhance the stability and safety.

The push-button operation and computerized management to use the fewest manpower to operate the cars in and out rapidly to bring the parking Garage Equipment into fully play.

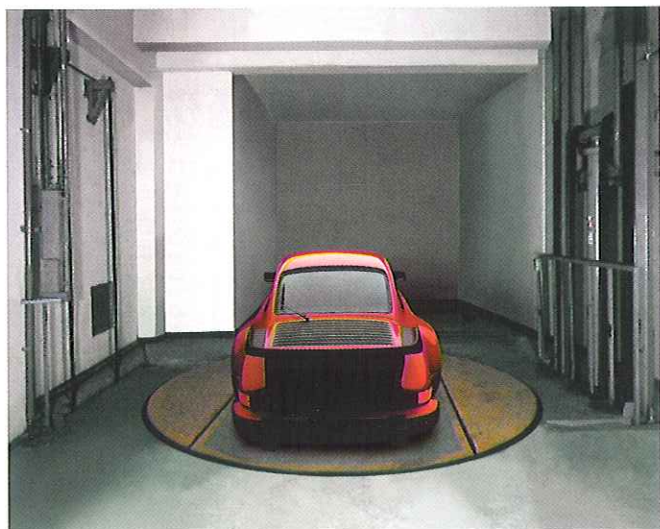


PARKING SYSTEM

停車設備

三洋電梯的停車設備，針對大樓空間、地下室提供不同型式的停車設備，以最小的空間，作最大的彈性利用，並採最先進的方式，提供安全性高、震動小且操作簡易的停車設備。

The SANYO ELEVATOR'S Parking System aims directly at the multi-storied building, the basement to offer different kind of parking system. To use the smallest space as the biggest flexible utility. Adopting the most advanced way to offer the high safety, low shake and easily operated parking system.



CAR TORN TABLE



P2D - DOUBLE PARKING



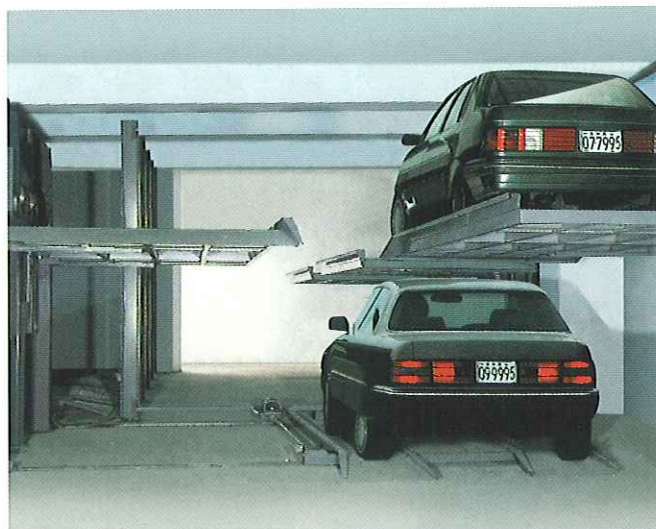
T2D - DOUBLE PARKING



S2D - DOUBLE PARKING



WT2D - DOUBLE PARKING



WTS - 2 D - DOUBLE PARKING



OSC - 2500 - ST



OSC - 2500 - 2U

SANYO YUSOKI KOGYO



三洋輸送機工業株式会社

SANYO YUSOKI KOGYO CO., LTD.

39-8 Min Amisimizu, Amagasaki-City Hyogo-Pref, 661, Japan
Tel: 81-66-4936165 • Fax: 81-66-4936118

中国地区总代理

沈阳三洋电梯有限公司

沈阳市皇姑区北陵大街32号三洋大厦7F

Tel: 86-24-86228608 • Fax: 86-24-86228608

邮编: 110032

Distributed by

